

Industrie 4.0 und Real-Time Location Analytics

# IoT & GIS

Michael Kuczynski  
01.02.2017



# Globales Unternehmen mit europäischen Wurzeln

## Hauptsitz in Frankreich und Deutschland



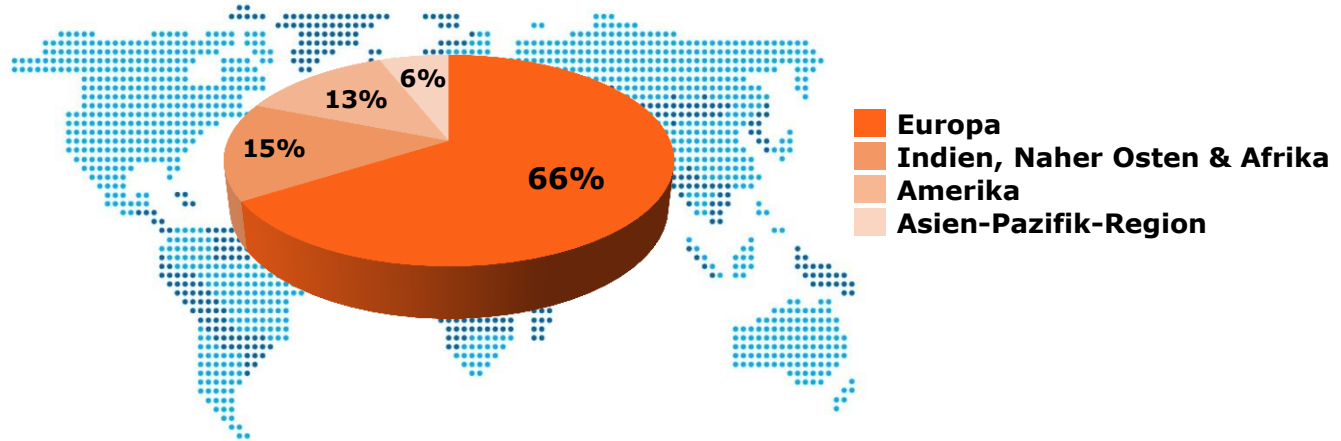
Bezons/Paris HQ

**Ca. 100.000 Mitarbeiter  
in 72 Ländern**

**In Deutschland  
ca. 12.000 Mitarbeiter**



München HQ



# Die Atos Geschäftsfelder

Managed  
Services



Consulting



Communication  
Software & Platforms



Systems  
Integration



GIS

Transactional &  
Payment Services



Cloud & Enterprise  
Software

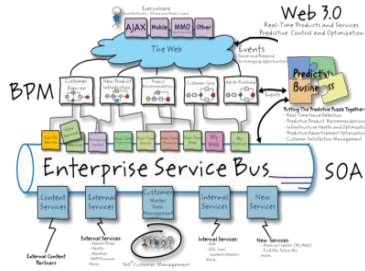


Big Data &  
Security





## System Integration



## GIS



## Cloud & Web Infrastructure



## Analytics



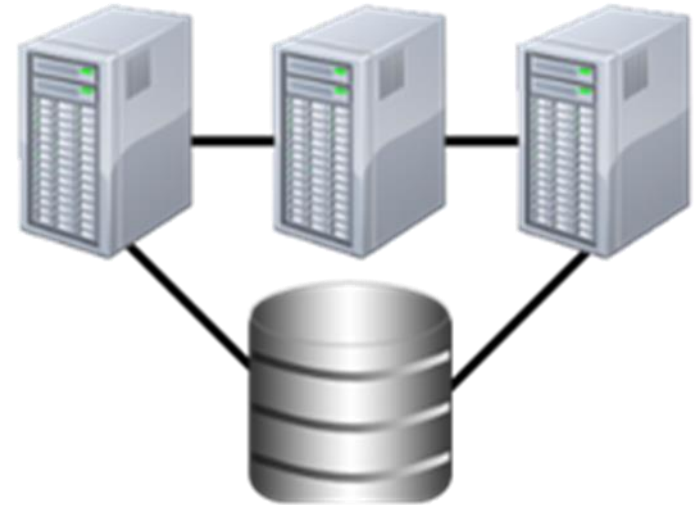
## Database Technology



# Key Offering - „Big GDI“

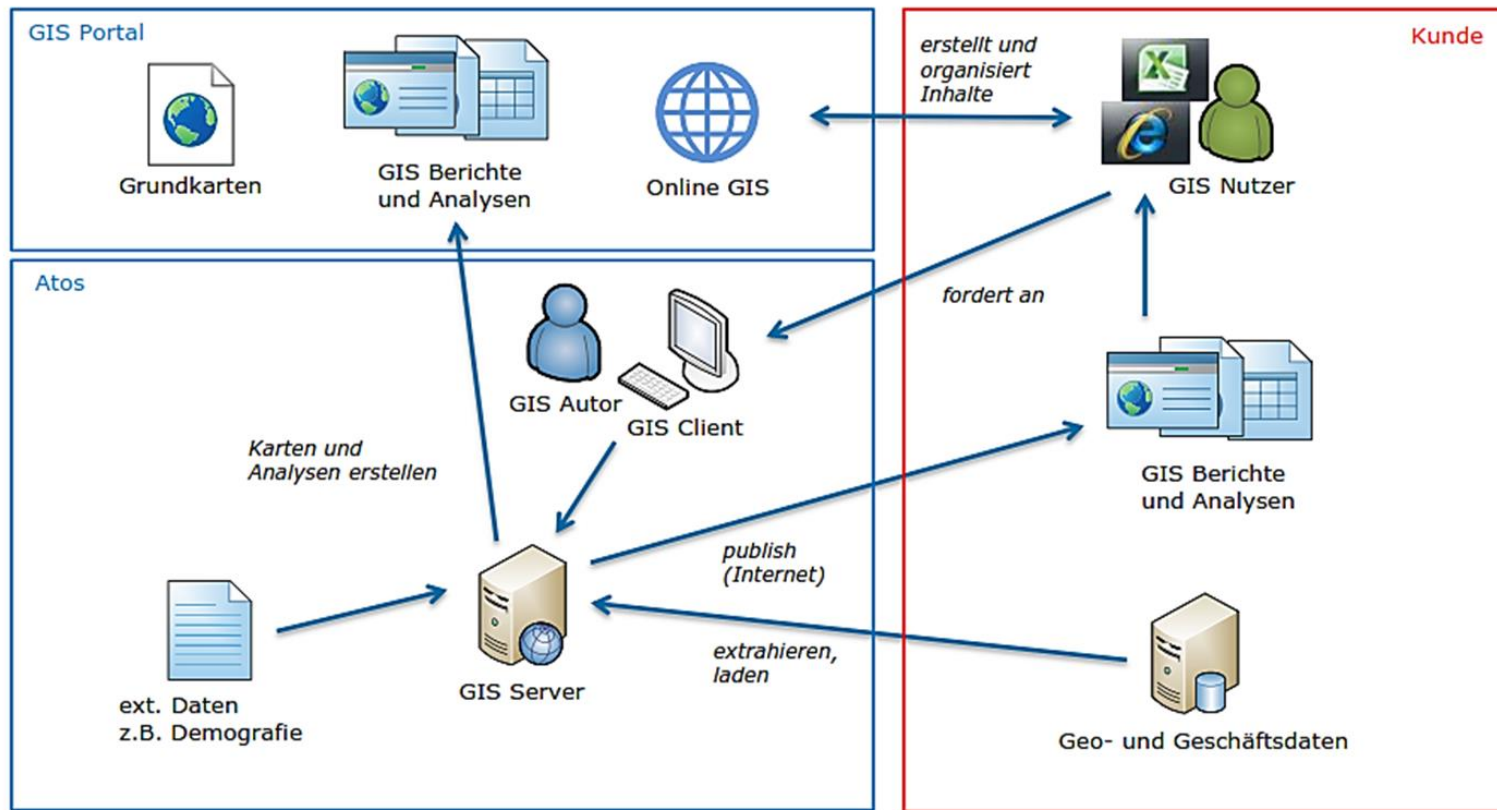
---

- ▶ Design und Sizing komplexer Geodateninfrastrukturen
  - auch im sicherheitsrelevanten Umfeld
- ▶ Aufbau und Betrieb
- ▶ Integration in die IT-Infrastruktur
- ▶ Daten-Migration und –Konsolidierung
- ▶ Support
  - aktuell für mehr als 1000 Anwender





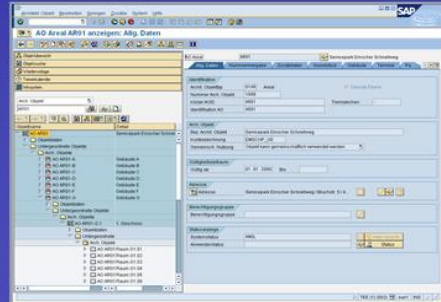
# Key Offering – „GIS as a Service“



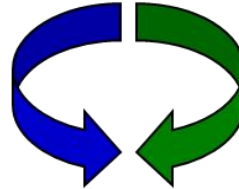
# Key Offerings- Integration

## SAP

Customer  
Contracts  
Business Data  
...



Land Use Management  
Real Estate  
Facility Management  
Plant Maintenance  
Construction



## GIS / CAD

Network  
Topology  
Technical Data  
...





# Industries

## Public & Health

Defense /  
HLS



C4I  
Missiles  
Urgencies  
...

Smart  
Cities &  
Research



Meteo  
Air quality  
Research  
...

Connected  
healthcare



Medical  
devices &  
machines  
...

## Manuf., Retail, Transport

Industry  
4.0



Connected  
plants &  
machines,  
...

Connected  
Retail



Connected  
stores &  
devices  
...

Connected  
Vehicles



Cars,  
trucks,  
machines,  
...

## Telco, Media, Utilities

Smart  
Telco



Devices,  
infra-  
structures,  
...

Medias



devices,  
advertising  
walls,  
...

Utilities



Smart Grid,  
smart  
water,  
...

Bank &  
insurance



Payment &  
smart  
devices



# 7,700,000,000,000,000,000,000

7,7 x 10<sup>21</sup> Gigabytes an Daten werden jeden Tag auf der Welt generiert

# 10%

---

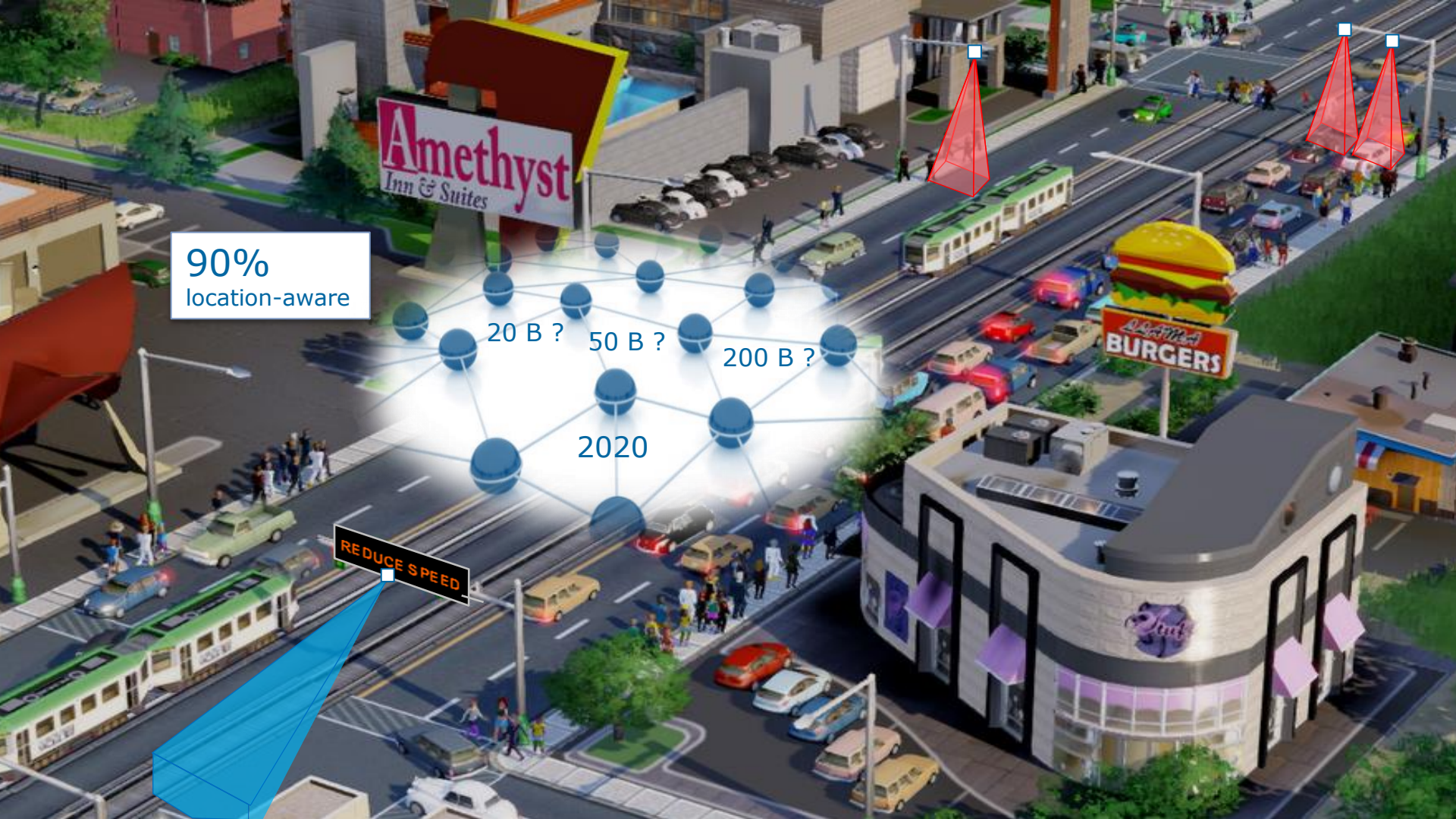
weniger als 10% der gesammelten Daten werden analysiert

90%  
location-aware

20 B ? 50 B ? 200 B ?

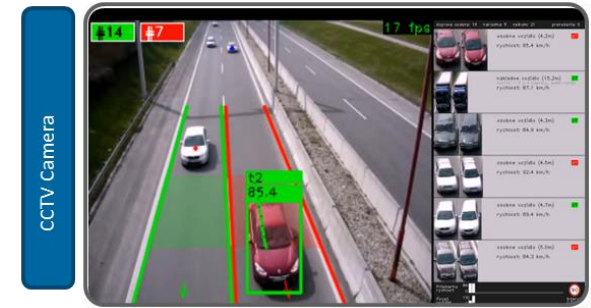
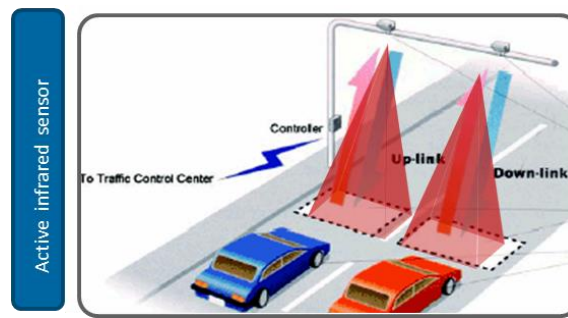
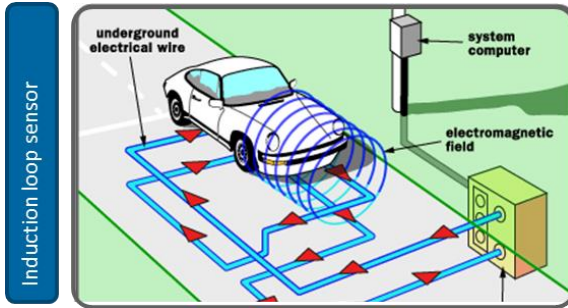
2020

REDUCE SPEED

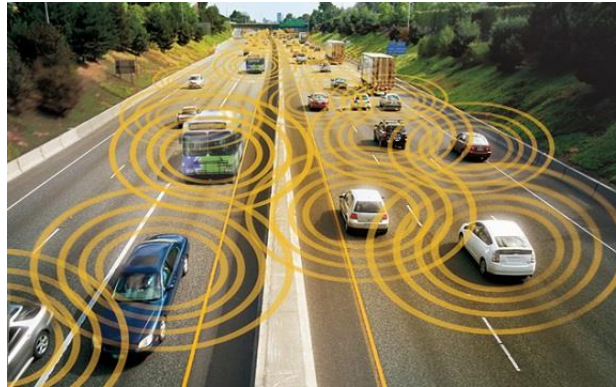




## Stationary field sensors (*discrete geo-locations*)



## Floating sensors (*moving geo-locations*)

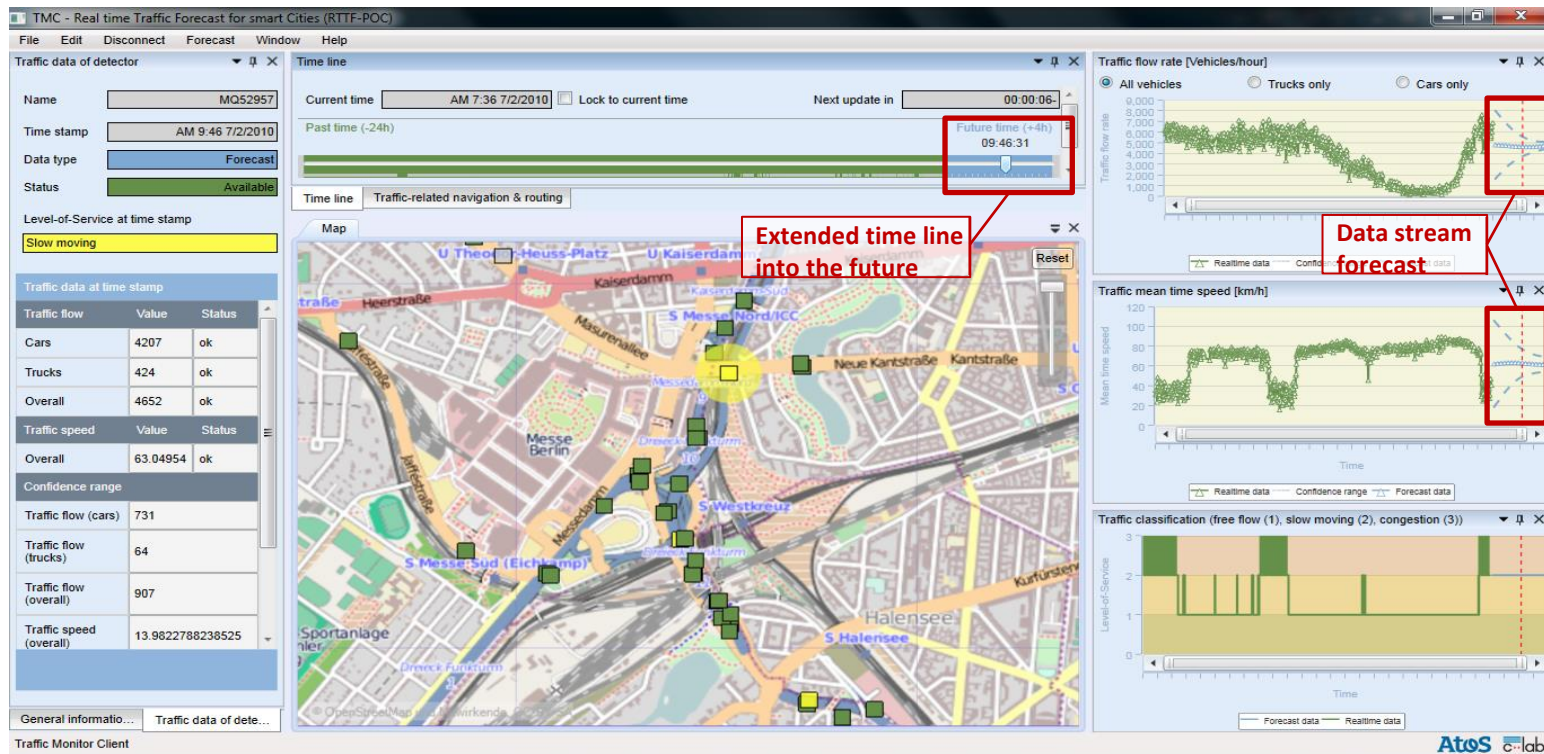


# Real Time Traffic Forecast

*Reconfigurable Dashboard (command & control center client)*

Portfolio  
Location Analytics

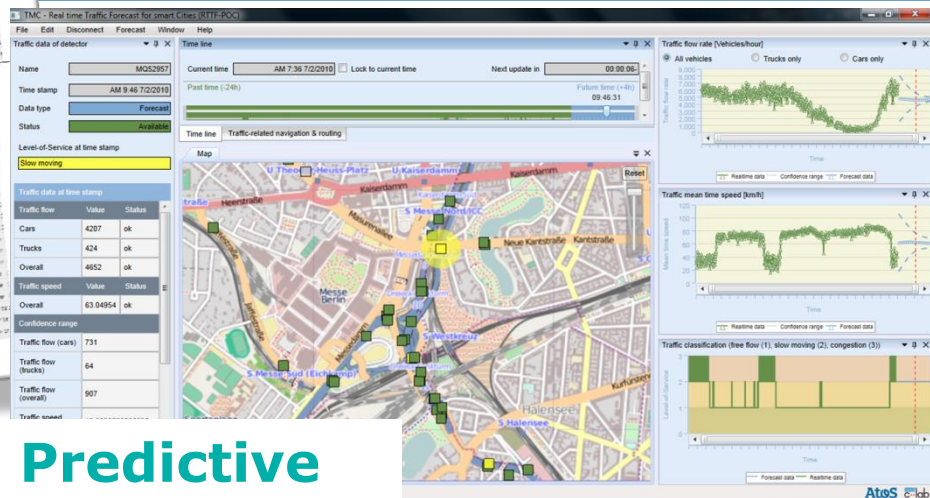
Real Time



[illegible]

# Predictive Prescriptive

# What will happen? What can we do?





# Our vision – Real Time Traffic Intelligence

*Open platform supporting proactive traffic management*

Portfolio  
Location Analytics

Real Time

## Basic ideas

Open platform approach

Multiple data provider & consumer

Fast (Big) data based

## Traffic Management Dept.



Proactive traffic management  
by forecasting sensor data

## Public Information & Services



## Private business & enterprises



Internal business optimization  
& 3th party service provision

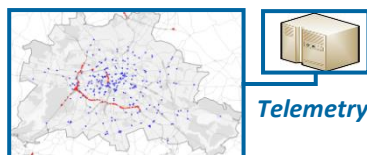
Services & Information

Multiple consumers for data, information and services

Real Time Traffic Intelligence (Highly scalable & configurable)

Multiple sources providing poly structured data and information

## Stationary field sensor network



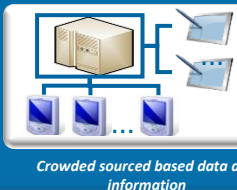
## Floating vehicle sensor network



## Open data (supplementary)



## Instant reports & data



# From Data to Information

## Siemens Power - Maintenance

---

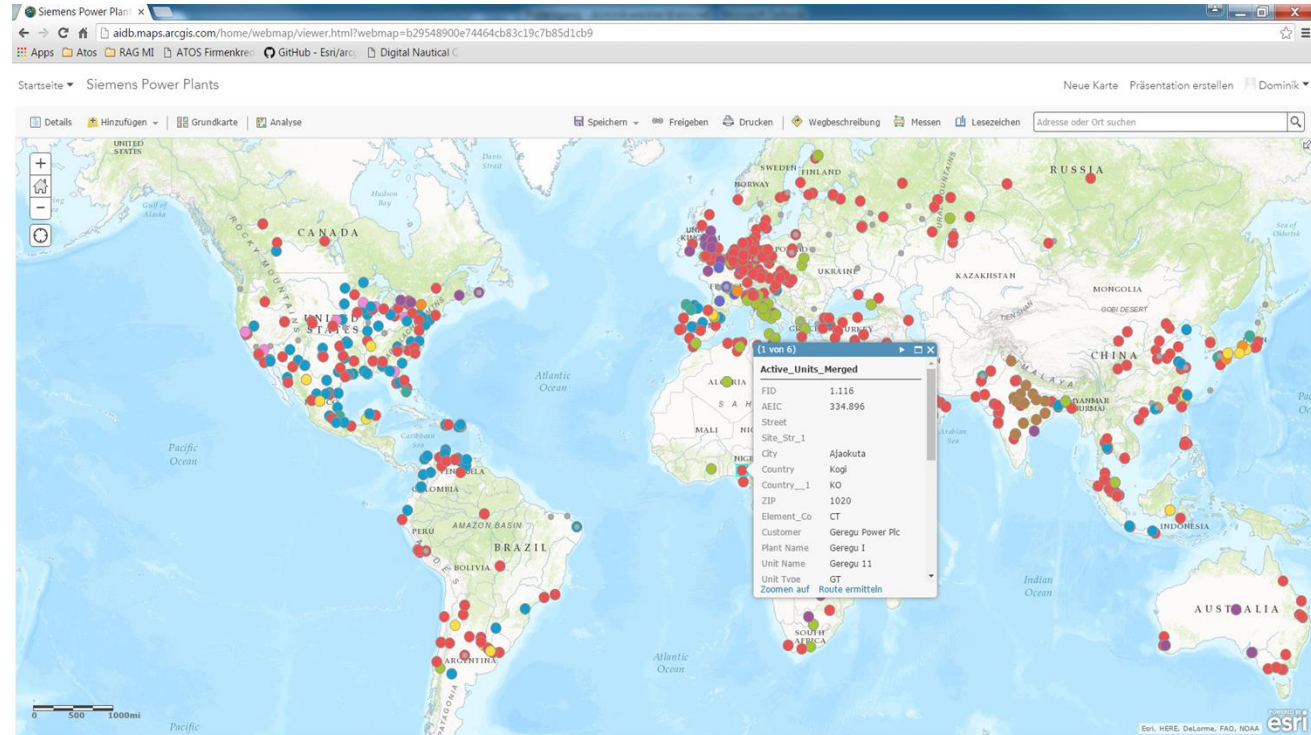
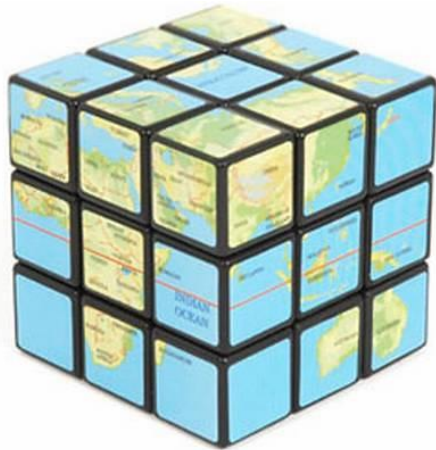
### Power Generation Services

Mit unserem breiten Spektrum an innovativen Produkten und Serviceleistungen sind wir weltweit einer der führenden Partner, wenn es darum geht, hohe Zuverlässigkeit und optimale Leistungsfähigkeit von Turbomaschinen für die Energiebranche, die Öl- und Gasindustrie sowie verschiedene Prozessindustrien sicherzustellen.

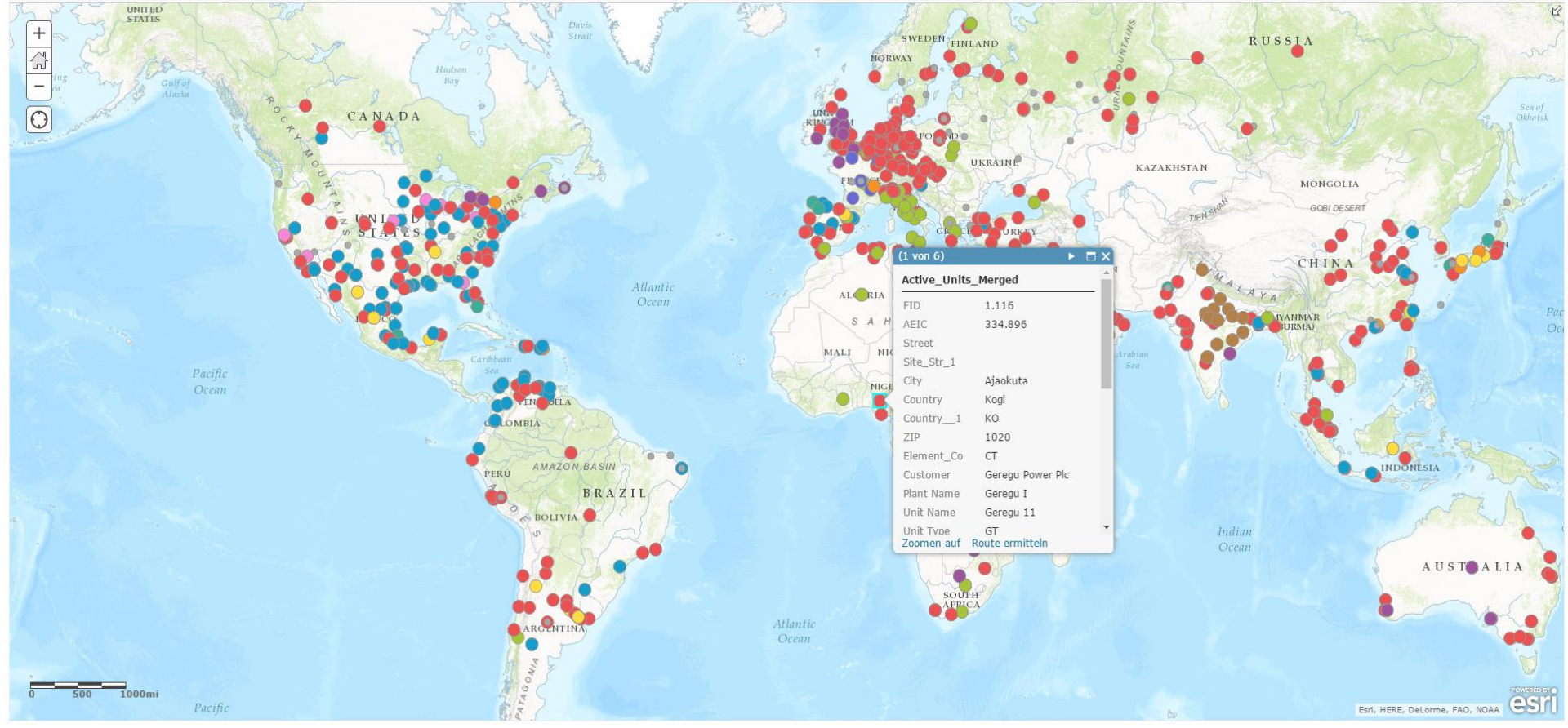




# From Data to Information







## Siemens Power Plants Dashboard for Multiple Displays\_2

Upcoming Events (1 Week) 

Other Event	June 1, 2016
Combustor	June 1, 2016
Minor Inspection	June 1, 2016
New Install	June 1, 2016
Medium Overhaul	

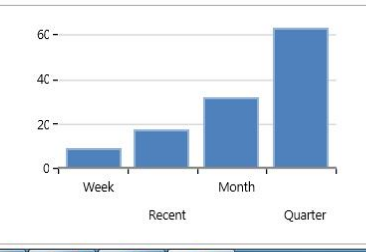
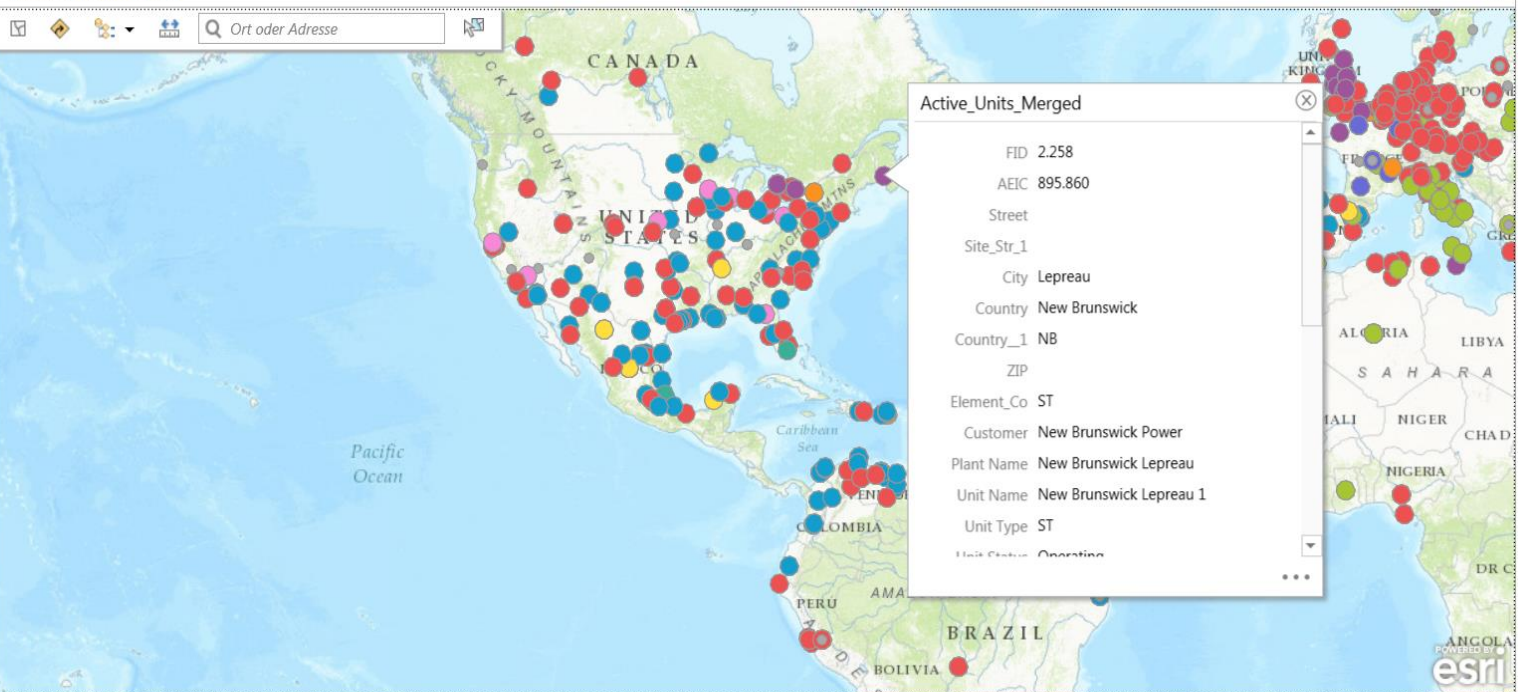
Upcoming Events (1 Month) 

●	Other Event Juni 1, 2016
●	Combustor Juni 1, 2016
●	Minor Inspection Juni 1, 2016
●	New Install Juni 1, 2016
●	Medium Overhaul

Upcoming Events (3 Months) 

Other Event	Jun 1, 2016
Combustor	Jun 1, 2016
Minor Inspection	Jun 1, 2016
New Install	Jun 1, 2016
Medium Overhaul	

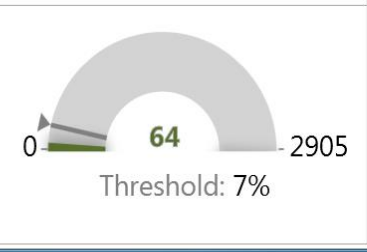
## Siemens Power Plants



### Current Outages

-  Major Inspection  
at Louisiana
-  Valves + Gen  
at Havana
-  Valves  
at Riverside Energy
-  Major Inspection

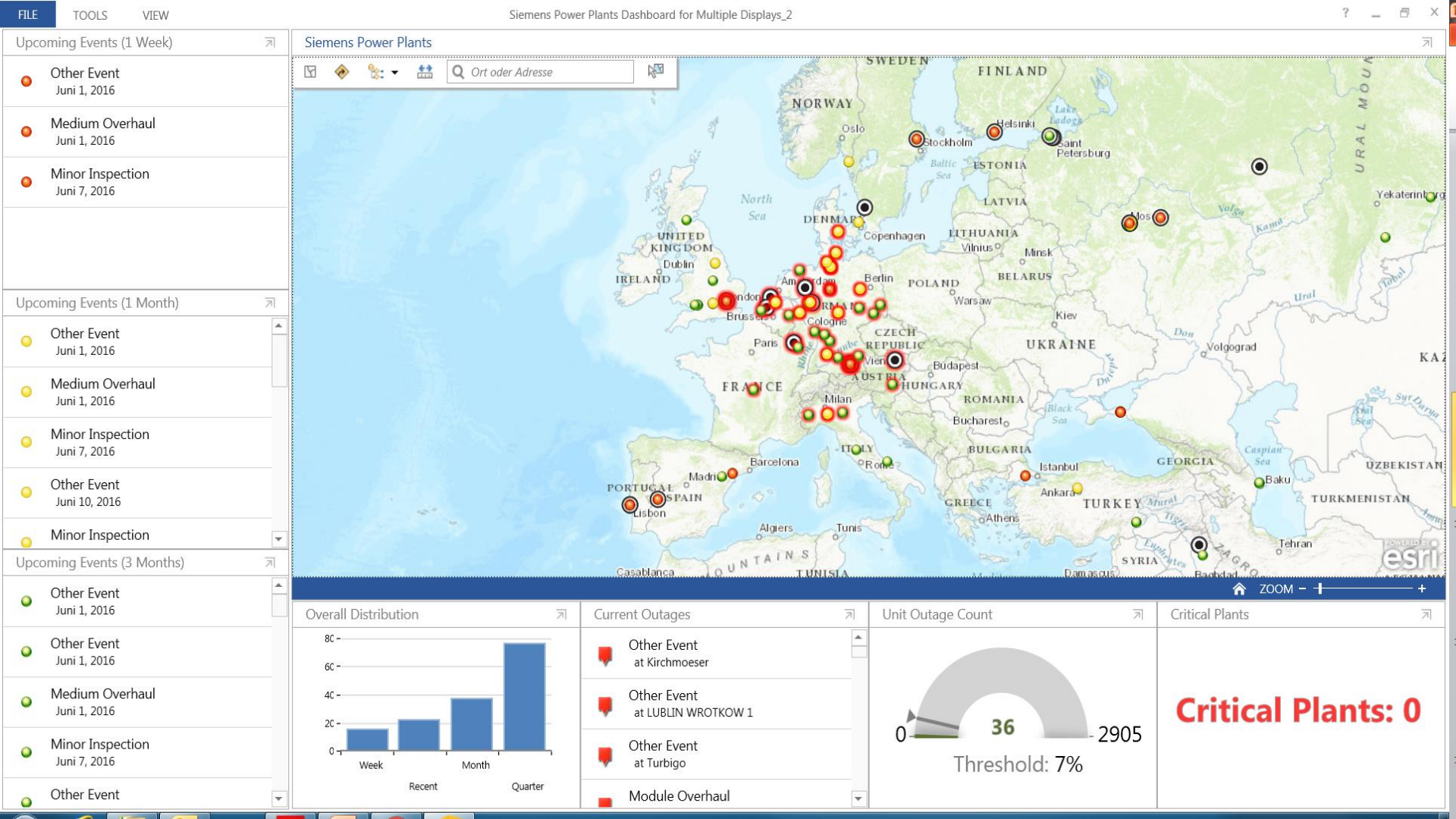
## Unit Outage Count

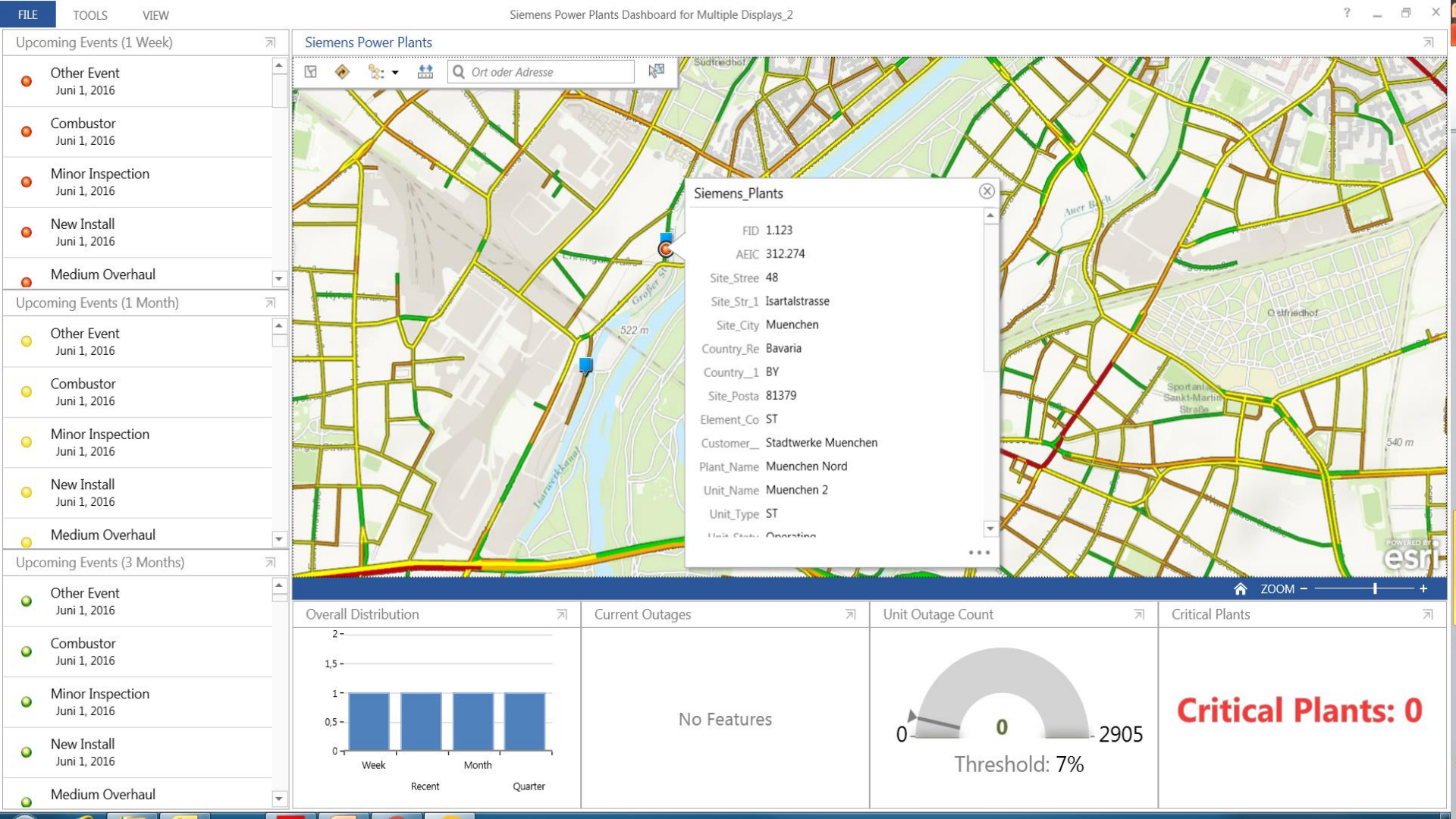


### Critical Plants

**Critical Plants: 32**





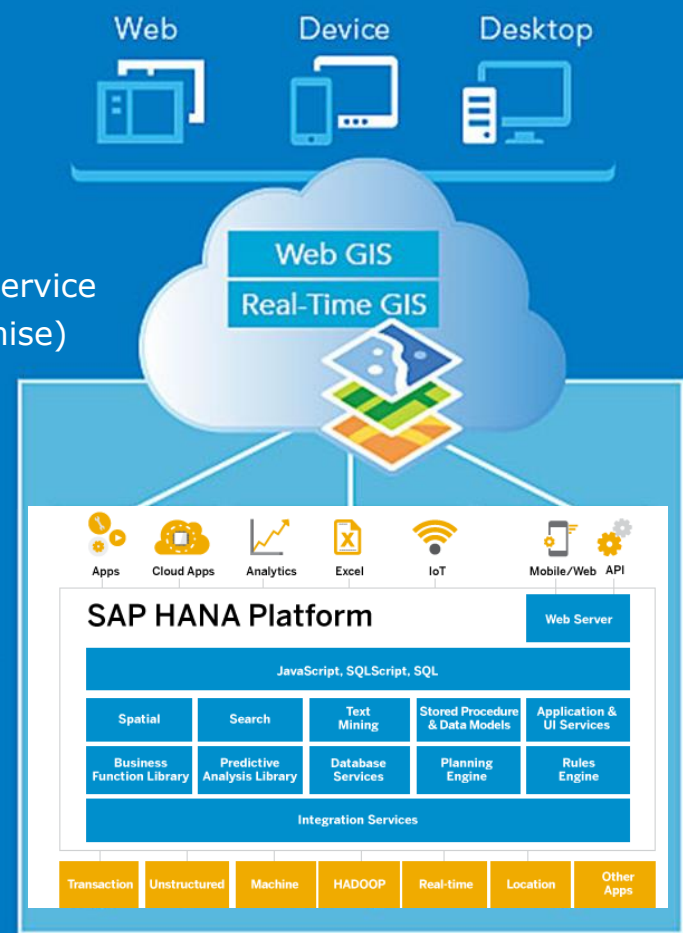


# Real-Time GIS

- ☐ Dashboard
- ☐ Web GIS
- ☐ Map Service
- ☐ Analytics
- ☐ Data

ArcGIS Online  
Atos GIS as a Service  
Portal (On-Premise)

GeoEvent Extension



Esri, 2016

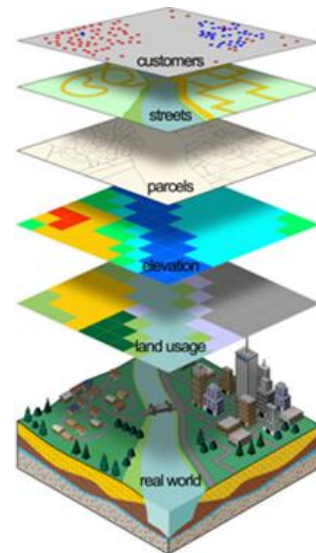
# The Challenge

## Combine Enterprise Data and Spatial Analytics

- ❑ Without replication
- ❑ In a single location
- ❑ In Real-time



Atos



**Spatially enabled applications to operate a company**



# Atos end-to-end SAP offering

**12.000+  
skilled SAP  
professionals**

**Local SAP teams in  
40+ countries**

**6.200+ SAP  
projects  
implemented in  
90+ countries**

**Built one of  
the world's  
largest  
Hybrid Cloud**

**2.9 million+  
SAP End-Users  
supported**

A faint, light gray world map is visible in the background of the bottom-center box, showing the continents of North America, South America, Europe, and Africa.

**SAP Partner for 32 years  
& SAP VAR Partner**

**Global SAP-certified in  
Hosting, HANA  
Operations, cloud and  
AM services**

**Industry leading  
SAP-certified  
Bullion Hardware  
for Hana**

## Public & Health

## Manuf., Retail, Transport Telco, Media, Utilities Financial Services

Defense /  
HLS

Smart  
Cities &  
Research

Connected  
healthcare

Industry  
4.0

Connected  
Retail

Connected  
Vehicles

Smart  
Telco

Medias

Utilities

Bank &  
insurance



C4I  
Missiles  
Urgencies  
...



Meteo  
Air quality  
Research  
...



Medical  
devices &  
machines  
...



Connected  
plants &  
machines,  
...



Connected  
stores &  
devices  
...



Cars,  
trucks,  
machines,  
...



Devices,  
infra-  
structures,  
...



devices,  
advertising  
walls,  
...



Smart Grid,  
smart  
water,  
...



Payment &  
smart  
devices

**Building Information Management**

**Facility Management**

**Maintenance optimization**

**Connected Healthcare**

**Grid infrastructure analytics**

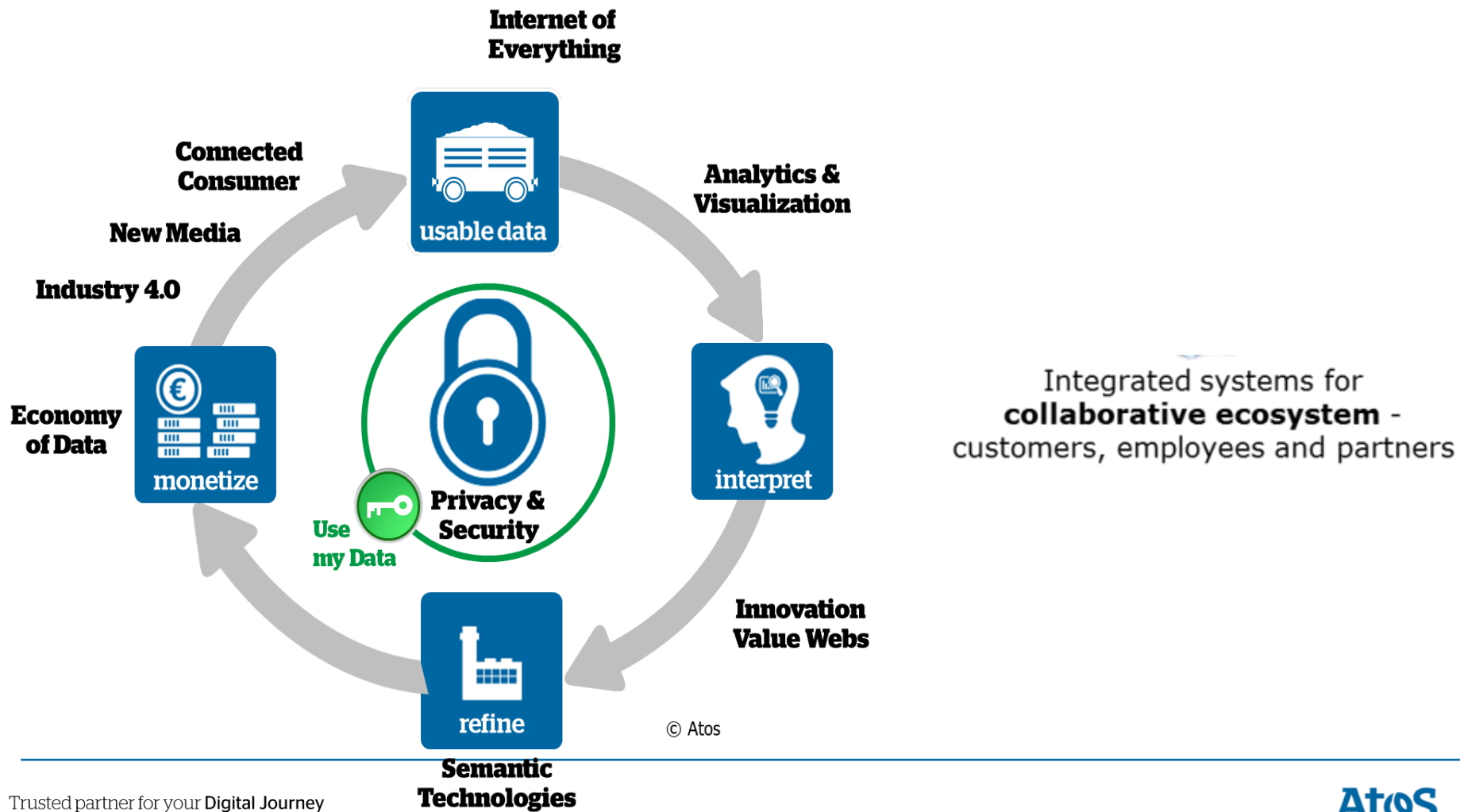
**Predictive maintenance**

**Demand response management**

**Virtual power plants**

**Leakage and fraud  
management**

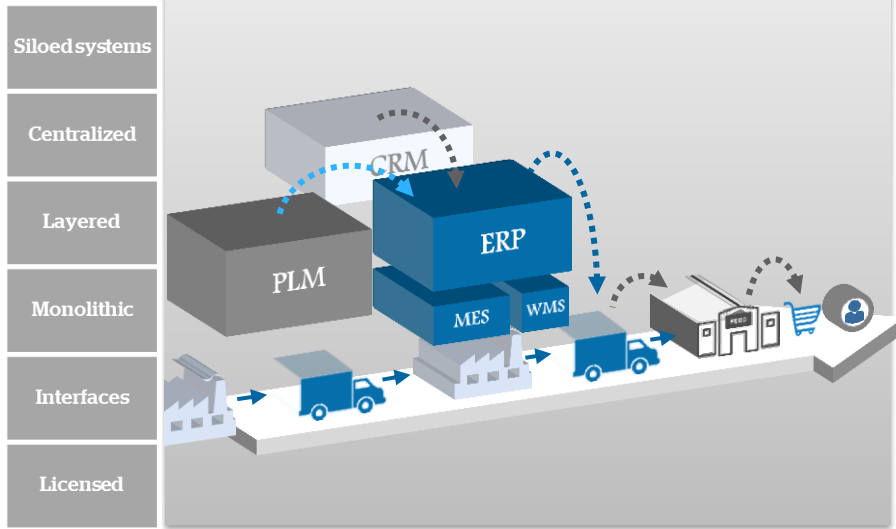




# Moving from single, siloed systems and organizations to an industrial network of capabilities

## PAST

While today's production is linearly organized and optimized within the boundaries of organizational and system siloes...



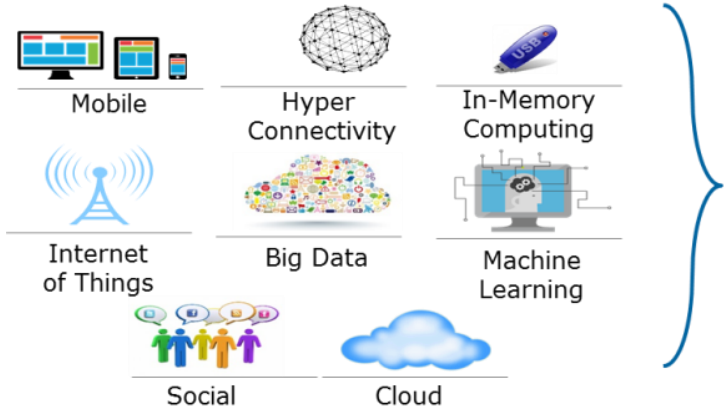
## FUTURE

... manufacturing of the future will fulfill individual customer needs by a collaborative and agile network of capabilities

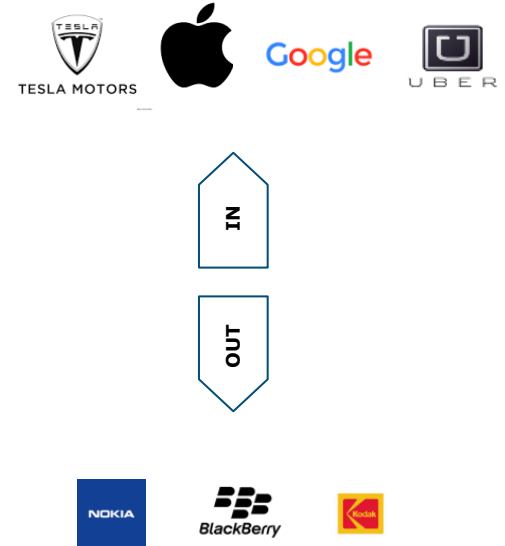


# The World is Changing

## Disruptive business models



## Adapt or Fail



# Innovation: at the heart of Atos strategy

## An ambitious technology roadmap

7

Themes

- Payment & e-commerce
- Internet of Things
- Big Data
- Next gen apps
- Next gen infra
- Cyber Security
- Unified Communication

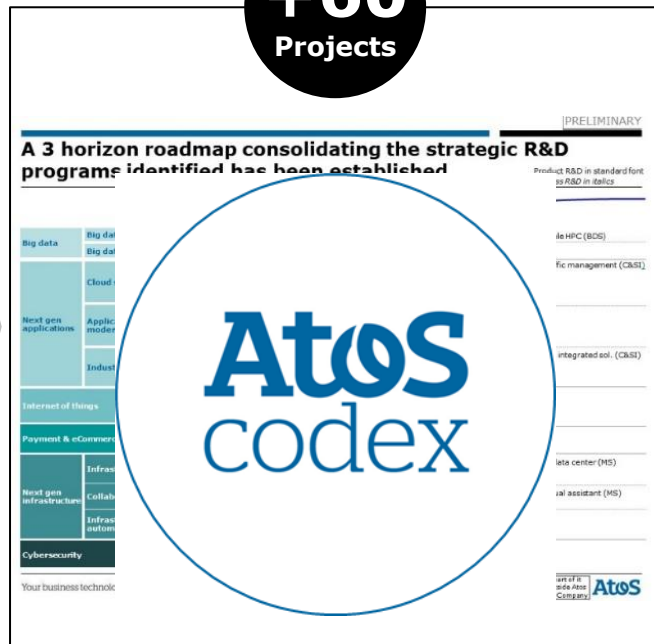
12

Programs

- Payment & e-commerce
- Internet of Things
- Big Data Software
- Big Data Hardware
- NGA: Industry 4.0
- NGA: Cloud solutions
- NGA: Apps modern
- NGI: Infra Services
- NGI: Collaborative Work PI
- NGI: Infra. Automation
- Cyber Security
- Unified Communication

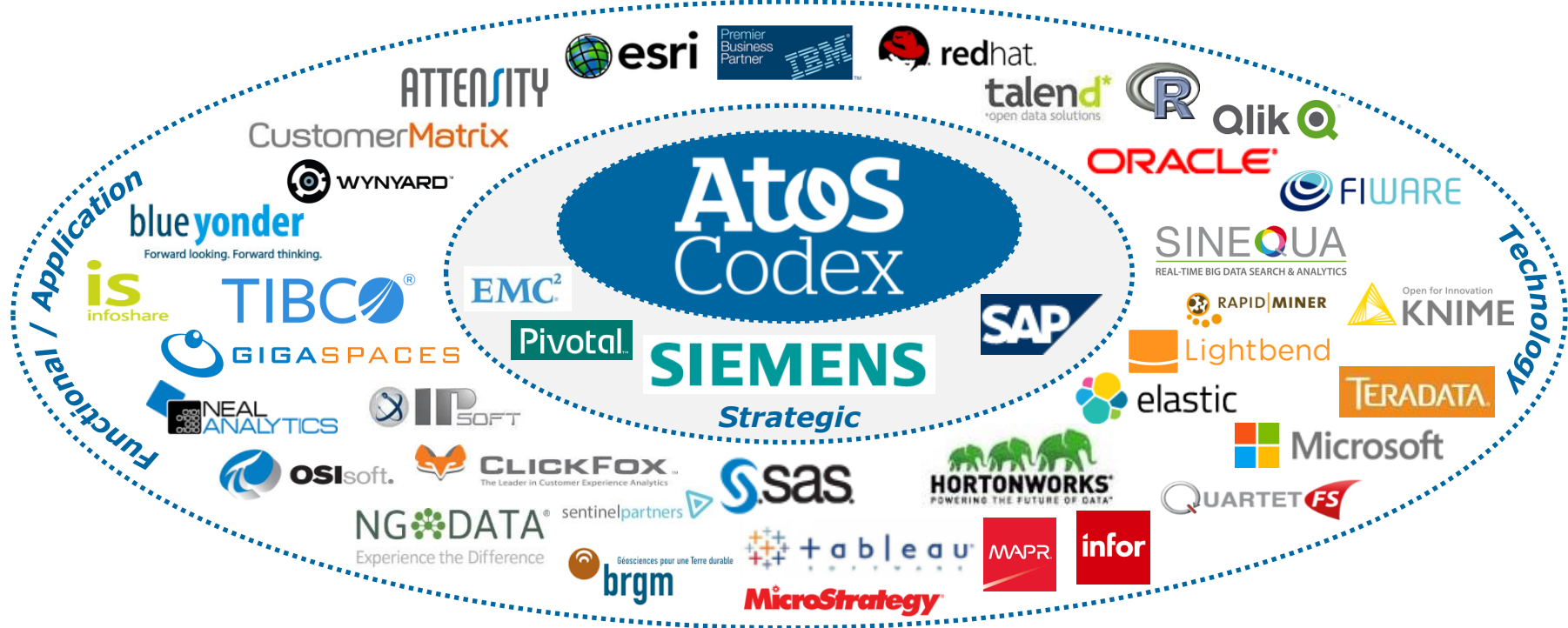
+60

Projects



# Atos Codex Analytics partner ecosystem

## Success through teamwork



bitkom

Innovation Area  
Industrie 4.0

Atos

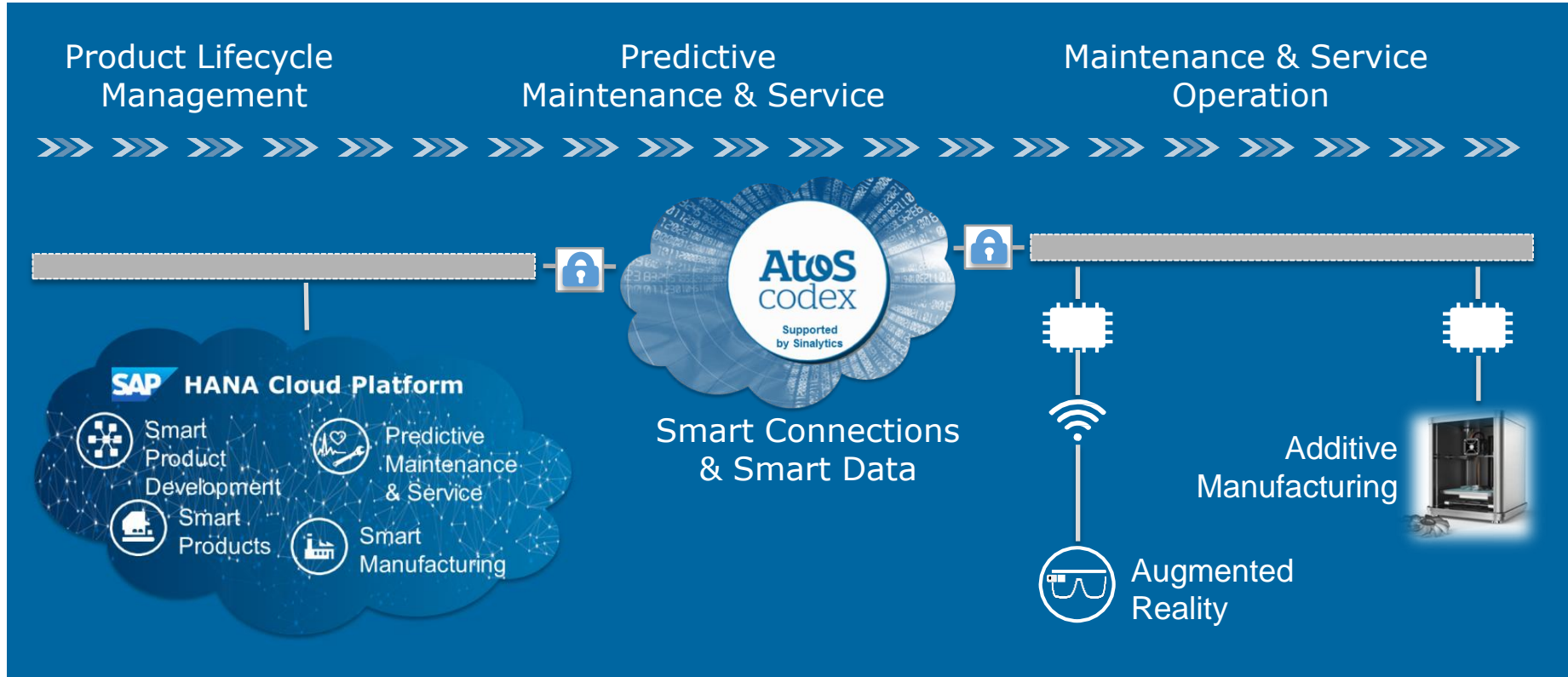
bitkom

Innovation Area  
Industrie 4.0





# Example: Predictive Maintenance and Service



# Examples of customers we work with on Analytics

## Manufacturing



## Retail



## Transport



## Public & Health



## Finance



## Telecom

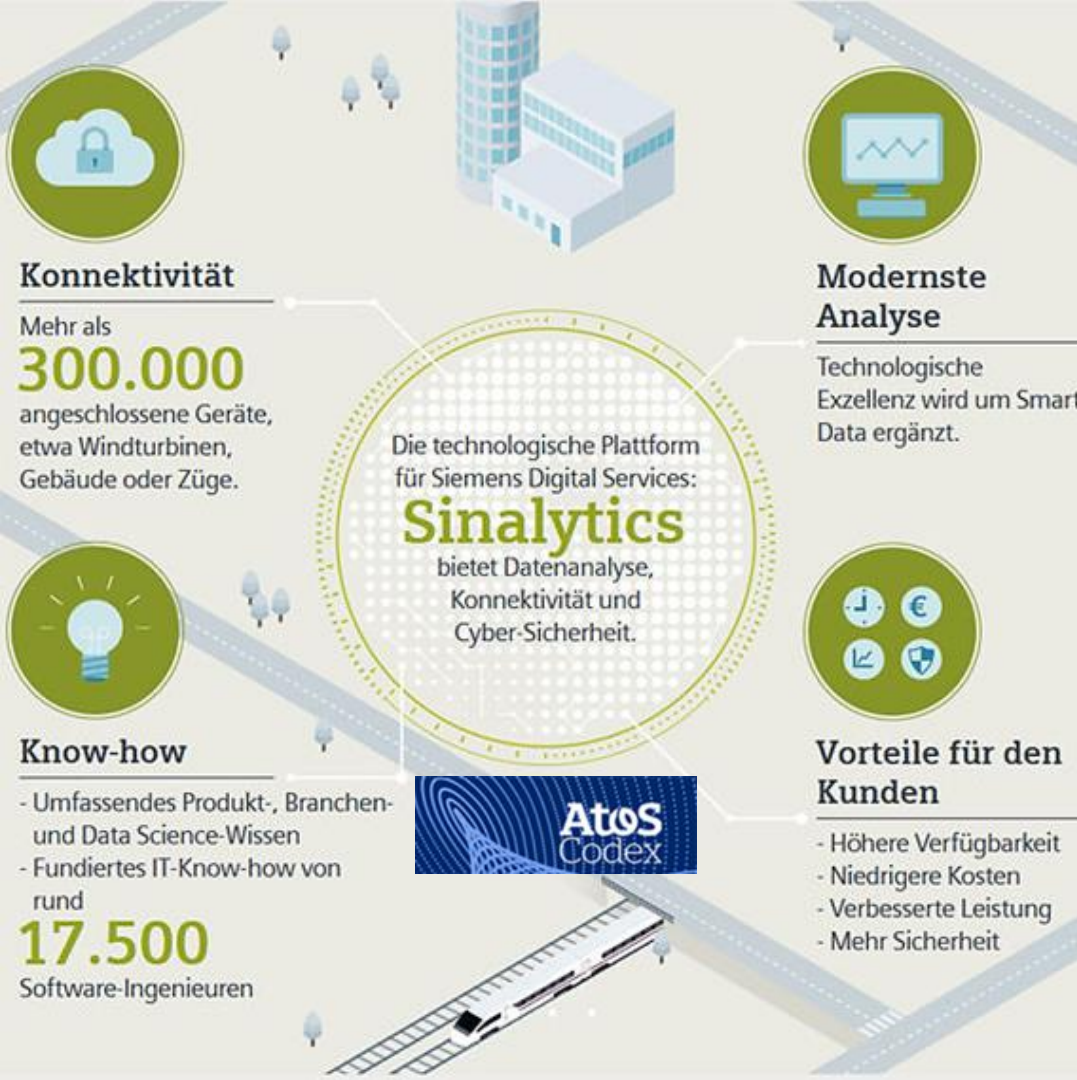


## Media



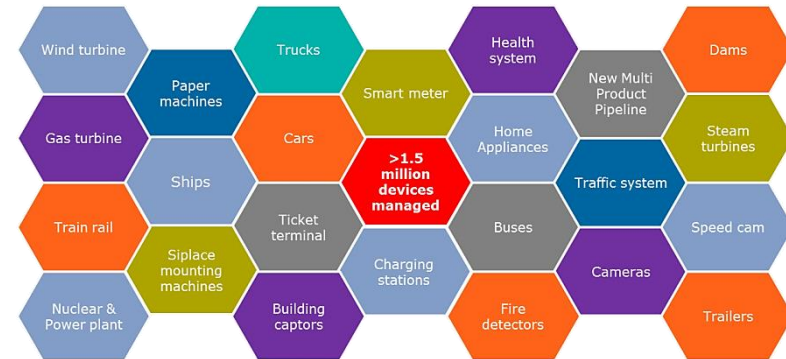
## Energy & Utilities





# Advanced Analytics für Industriedaten

## Die gemeinsame Plattform von Siemens und Atos



# Today, more than 300,000 systems are serviced with our platform at Siemens

## Industry



- ▶ Paper machines
- ▶ Ships
- ▶ Cranes
- ▶ SIPLACE mounting machines
- ▶ Building technology (e.g. building automation systems, fire detectors, cameras)
- ▶ Traffic systems (e.g. traffic computers, traffic light systems, traffic management systems)
- ▶ GAS Analysis
- ▶ Train Rail Automation

## Energy



- ▶ Gas turbines
- ▶ Steam turbines
- ▶ Power plant control systems
- ▶ Wind power plants
- ▶ NMPP New Multi Product Pipeline in South Africa

## Healthcare



- ▶ X-ray systems
- ▶ Ultrasound systems
- ▶ Magnet resonance tomography systems
- ▶ Hospital information systems
- ▶ Diagnostic systems
- ▶ Particle Therapy



# Atos - Partner for the Olympic Games Real-Time Analytics

---

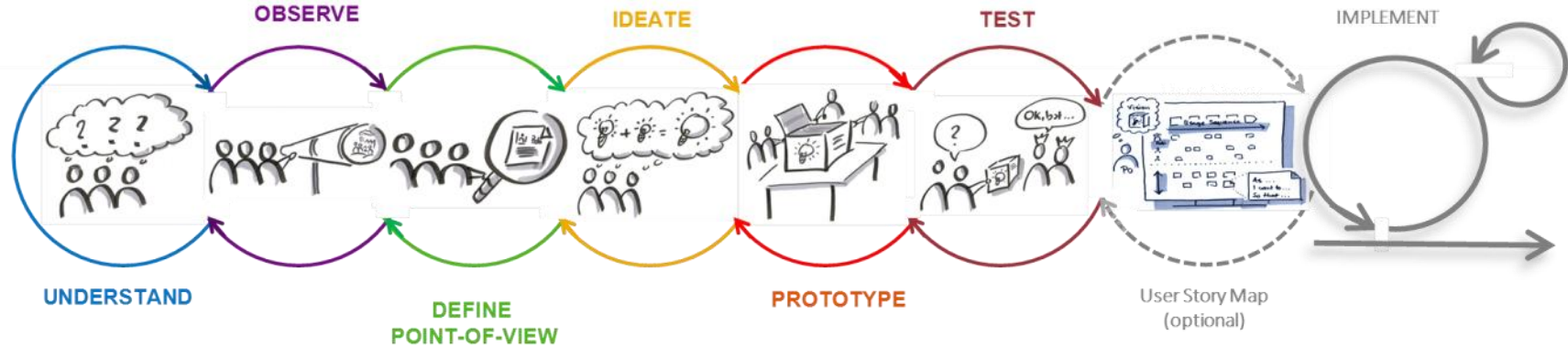
Atos is the lead technology integrator, delivering the performance of 14,850 athletes (2016) to 4 billion viewers

- ▶ Worldwide IT Partner of the **Olympic & Paralympic Games**
- ▶ **Cloud enabled IT**
- ▶ **Atos Codex** offers real time data available to end user
- ▶ **Real-Time Analytics** neutralize 200 IT security events per second with 0 impact



# Start Small – Think Big – Move Fast

## From first ideas to first roll-outs



Trusted partner for your Digital Journey

Lab Approach		Consulting Approach
<b>Rapid Prototyping / Hackathons</b> organize rapid prototyping sessions, together with Innovators like universities, research institutes or think tanks create rough storyboards and user interface sketches to visualize the look & feel of an application	days	<b>Innovation Workshops</b> brainstorming session with a focus on hands-on experience and demos, creation of ideas in a creative environment
<b>Proof-of-Concepts</b> produce a „close-to-reality“ representation of the envisioned solution by using as many real interfaces and devices as are available, simulate or mock-up the rest	weeks	<b>Assessments</b> proven and structured methodology to identify overall I4.0 readiness, detect low-hanging fruits and mid-term potential
<b>Pilots and Field Trials</b> roll-out the first version of the solution to friendly users e.g. in your home market test your solution in real-life environment but with limited number of devices and users to minimize cost and risk	months	<b>Consulting &amp; Value Engineering</b> business and technology consulting along the end-to-end value-chain (hardware, connectivity, data, analytics, services)
		<b>Business Partnership</b> joint governance model to define the business plan for the transformation program along its technical, commercial and organizational aspects, risk- and revenue-sharing model

# Thank you

Further information:

- ▶ Michael Kuczynski
- ▶ [kuczynski.michael@atos.net](mailto:kuczynski.michael@atos.net)
- ▶ + 49 211 399 31238



# Leveraging multiple capabilities of HCP

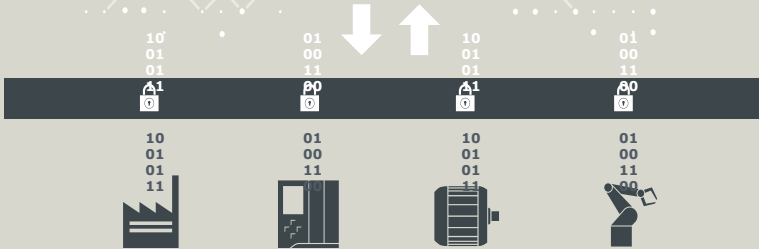
## Siemens MindSphere – An open cloud platform for Industry Customers

### MindApps



Optimierung der Leistung von Assets,  
Energie- und Ressourcenverbrauch,  
Instandhaltung, Services ...

### MindSphere – Siemens Cloud for Industry



### Optimization of plants and machines as well as energy and resources

- **Open standards** for connectivity of Siemens and 3rd party products
- **Plug and play connection** of Siemens products (engineering in the TIA Portal)
- **Cloud for industry** with open application inter- face for individual customer applications
- Transparent **pay-per-use pricing model**
- Opportunities for completely new **business models** (e.g. selling machine hours)

### HCP Micro services used:

- [Integration service](#) (HCC and HCI) for connecting back-ends
- [IoT micro-service](#) for MindSphere middleware
- [HCP Mobile Service](#) for mobile apps